

The background is a dark, almost black, space filled with a dense field of glowing orange and yellow particles of various sizes, resembling a star field or a microscopic view of a material. Several prominent, wavy, horizontal lines of a similar orange-gold color stretch across the middle of the image. In the lower right, two thick, parallel diagonal lines, also in the same orange-gold hue, run from the bottom left towards the top right. The overall effect is one of dynamic energy and connectivity.

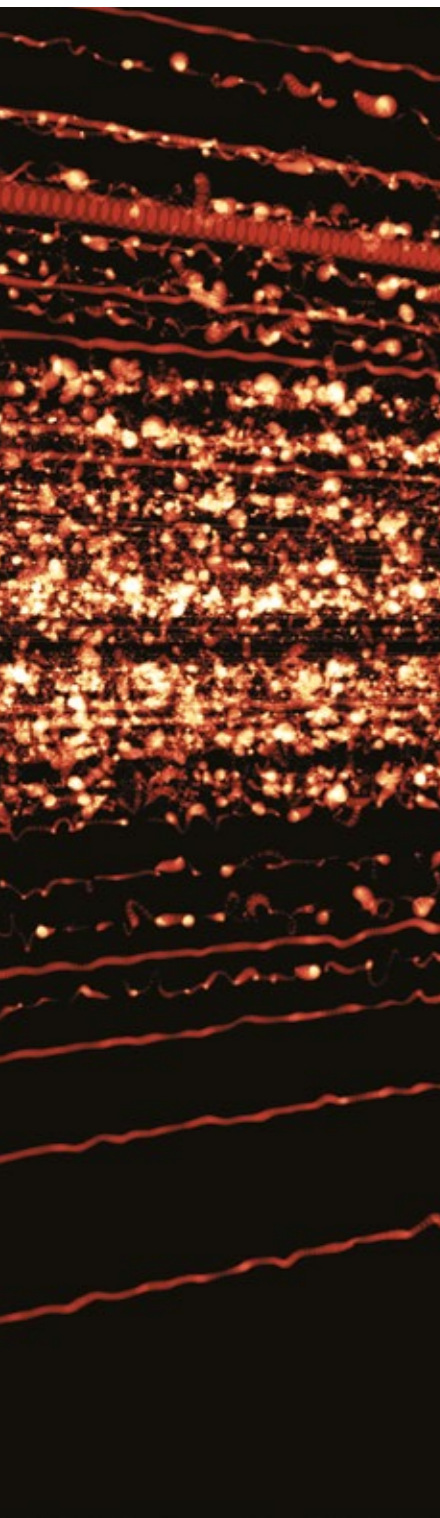
On Line / Off Line

**Interface<sup>®</sup>**

MEETING ROOM 2



PRODUCT OFF LINE COLOURS PEWTER/CLOUD & PEWTER/MANDARIN  
PRODUCT ON LINE COLOUR PEWTER INSTALLED ASHLAR



## EN

### Everything you need to create a dynamic, modern floor

This collection of Skinny Planks offers a wide spectrum of possibilities. Off Line features a linear design consisting of two colours that are perfectly matched with the vibrant On Line solid tiles. Combine the two for smooth transitions between neutrals and brights, hard and soft lines.

Play with the layout to create your own composition at the scale you want. Use Off Line to establish a soft border between two or more On Line colours or create a playful image using the Off Line tiles as accents. You can even stimulate wayfinding with a band of contrasting colour.

Everything is possible with the right connection.

---

## FR

### Tout ce dont vous avez besoin pour créer un sol dynamique et moderne

Cette collection de Skinny Planks offre un large spectre de possibilités. Off Line offre un design linéaire bicolore, en parfait accord avec les dalles On Line. Combinez les deux afin d'avoir une transition en douceur entre le neutre et le clair, entre les lignes vives et légères.

Jouez avec la disposition pour créer votre propre composition à l'échelle que vous souhaitez. Utilisez Off Line pour établir des frontières entre une ou deux couleurs des dalles On Lines, ou créez une image amusante en utilisant les dalles Off Line comme des accents. Vous pouvez aussi recréer des signalisations avec les bandes de couleurs contrastées.

Tout est possible avec la bonne connexion.

---

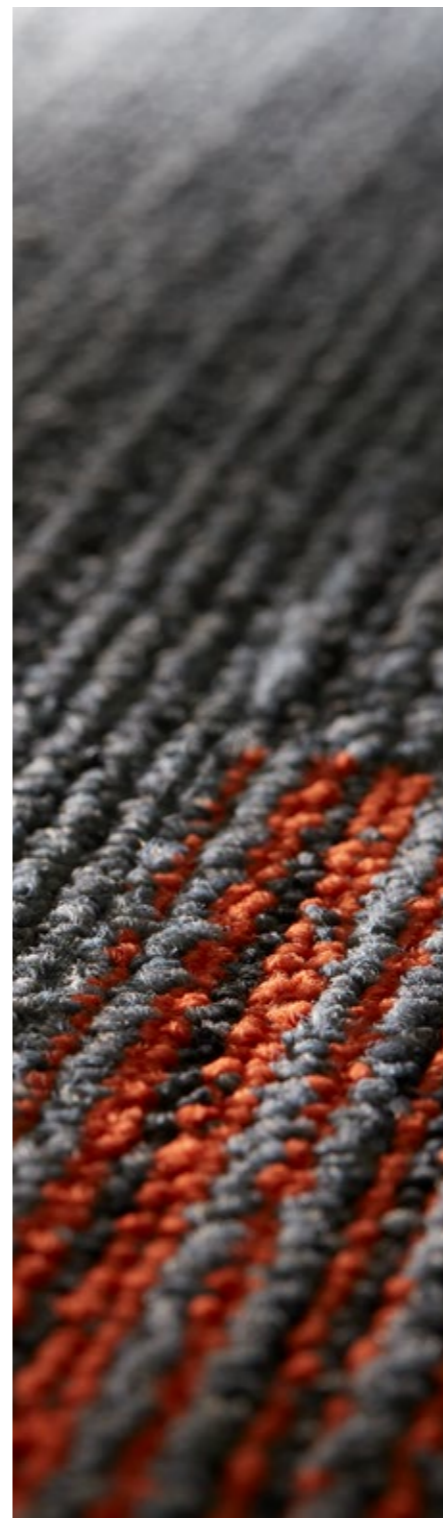
## DE

### Schaffen Sie einen abwechslungsreichen und modernen Boden

Diese Skinny Planks Kollektion bietet schier unendliche Möglichkeiten. Off Line besticht durch sein lineares Design in zwei Farben, das perfekt mit den kräftigen, vollfarbigen On Line Fliesen harmonisiert. Kombinieren Sie beide Produkte für einen weichen Übergang von neutralen zu lebendigen Farbtönen sowie linearen und vollflächigen Designs.

Spielen Sie mit den Möglichkeiten, um Ihre ganz eigene Komposition zu kreieren. Nutzen Sie die Off Line Fliese, um einen harmonischen Übergang zwischen zwei oder mehr On Line Farbtönen zu schaffen oder gestalten Sie frei und spielerisch ein ganz eigenes Design, in dem Sie die Off Line Fliesen z.B. gezielt als Akzent einsetzen. Durch das Zusammenspiel von Kontrastfarben können Sie sogar Wegeführungen kreieren und damit Laufwege fördern.

Alles ist möglich im richtigen Zusammenspiel.



## NL

### Alle ingrediënten voor een dynamische, moderne vloer

Deze collectie Skinny Planks biedt een scala aan mogelijkheden. Off Line wordt gekenmerkt door een lineair design in twee kleuren, die gelijk zijn aan de uni kleuren van de On Line tegels. Combineer de twee voor een vloeiende overgang tussen neutrale en heldere kleuren of harde en zachte lijnen.

Speel met het vloerontwerp om uw eigen compositie te creëren — op de schaal die u wilt. Gebruik Off Line voor een zachte grens tussen twee of meer On Line kleuren of ontwerp een speels beeld door de Off Line planken als accenten in te zetten. De collectie kan zelfs worden gebruikt voor bewegwijzering.

Alles is mogelijk met de juiste verbinding.

---

## ES

### Todo lo que necesitas para crear un pavimento moderno y dinámico

Esta colección de Skinny Planks ofrece una amplia gama de posibilidades. Off Line cuenta con un diseño lineal en dos colores que combina perfectamente con las sólidas y vibrantes losetas On Line. Combínalas para obtener transiciones suaves entre neutros y brillos, líneas marcadas o líneas suaves.

Juega con el diseño para crear tu propia composición en la escala que desees. Utiliza Off Line para establecer una suave frontera entre dos o más colores On Line o crea una imagen más desenfadada utilizando losetas Off Line para dar toques de color. Puedes incluso crear un sugerente camino con una fila de un color contrastante.

Todo es posible con la conexión correcta.

---

## SE

### Allt du behöver för att skapa ett dynamisk och moderna golv

Denna kollektion Skinny Planks erbjuder ett brett spektrum av möjligheter. Off Line har en linjär design i två färger som matchar perfekt med den livliga On Line. Kombinera de två för mjuka övergångar mellan neutralt och färgglatt, hårt och mjukt.

Skapa ditt eget unika uttryck som passar just din miljö. Använd Off Line för att upprätta en mjuk gräns mellan två eller flera färger i On Line. Eller kanske en lekfull design med Off Lines plattor som accent.

Allt är möjligt med den rätta kombinationen.



PRODUCT OFF LINE COLOUR SAGE/CANARY INSTALLED DESIGN BY TILE  
PRODUCT ON LINE COLOURS SAGE & CANARY INSTALLED ASHLAR



PRODUCT OFF LINE COLOURS MUSHROOM/BISCUIT & MUSHROOM/MUSTARD  
PRODUCT ON LINE COLOUR MUSHROOM INSTALLED HERRINGBONE

MEETING ROOM 2



PRODUCT OFF LINE COLOUR PEWTER/CLOUD  
PRODUCT ON LINE COLOURS PEWTER & CLOUD INSTALLED ASHLAR



PRODUCT OFF LINE COLOUR SAGE/CANARY  
PRODUCT ON LINE COLOUR SAGE INSTALLED DESIGN BY TILE



PRODUCT OFF LINE COLOUR MUSHROOM/BISCUIT  
PRODUCT ON LINE COLOURS MUSHROOM & BISCUIT INSTALLED ASHLAR



PRODUCT OFF LINE COLOUR PEWTER/MANDARIN  
PRODUCT ON LINE COLOURS PEWTER & MANDARIN INSTALLED DESIGN BY TILE



PRODUCT OFF LINE COLOUR MUSHROOM/MUSTARD  
PRODUCT ON LINE COLOURS MUSHROOM & MUSTARD INSTALLED ASHLAR

## On Line Colour Range

---



7335001 BISCUIT



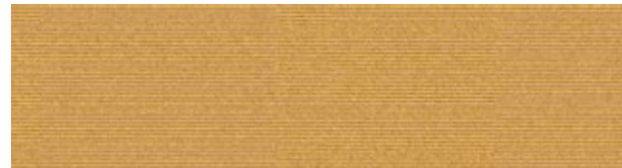
7335002 MUSHROOM



7335003 MUSTARD



7335004 SAGE



7335005 CANARY



7335006 CLOUD



7335007 PEWTER



7335008 MANDARIN



7335009 PEPPER



7335010 LIME

## Off Line Colour Range

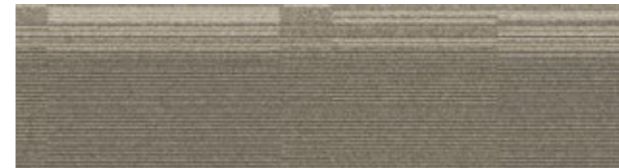
---



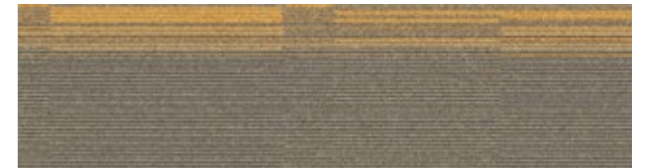
7559001 MUSHROOM/BISCUIT



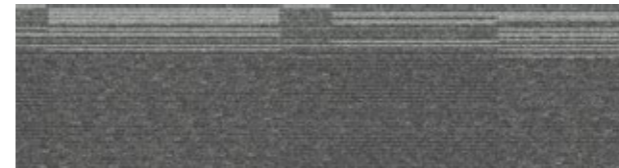
7559002 MUSHROOM/MUSTARD



7559003 SAGE/BISCUIT



7559004 SAGE/CANARY



7559005 PEWTER/CLOUD



7559006 PEWTER/MANDARIN



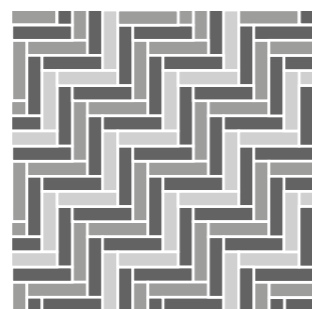
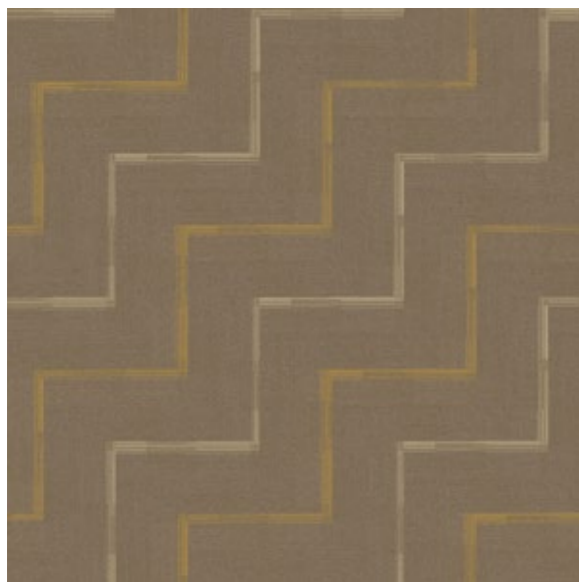
7559007 PEPPER/CLOUD



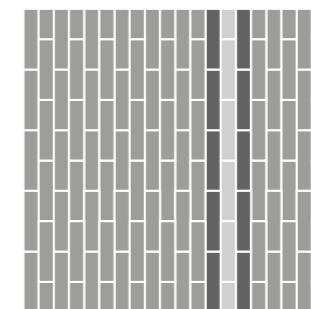
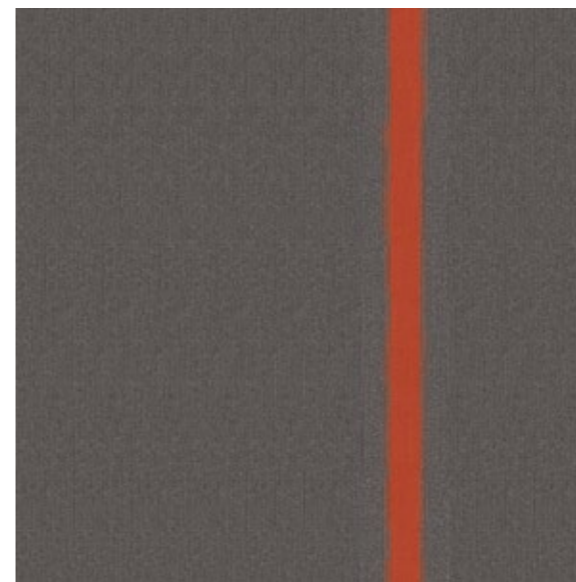
7559008 PEPPER/LIME



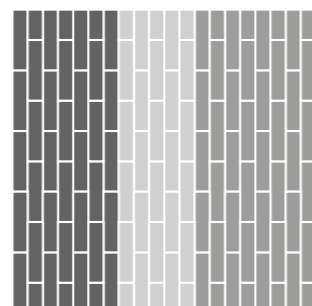
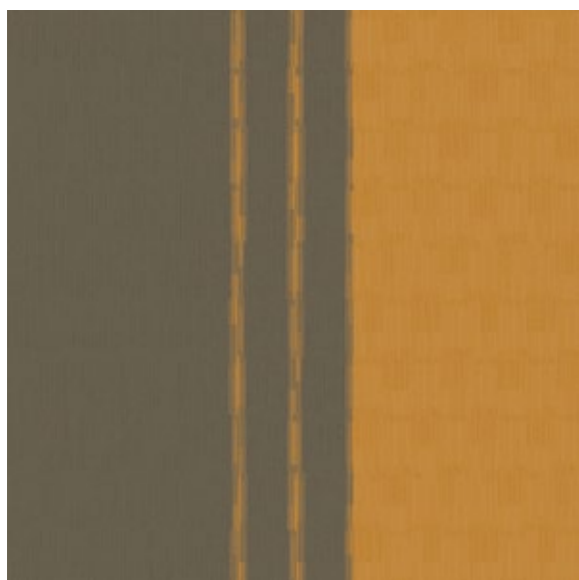
Design Ideas Use the design by tile layout suggestions below to create your own unique floor designs.



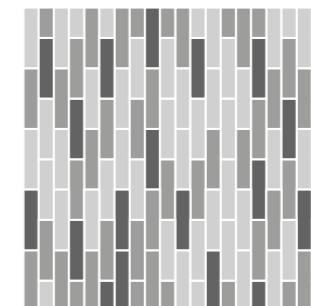
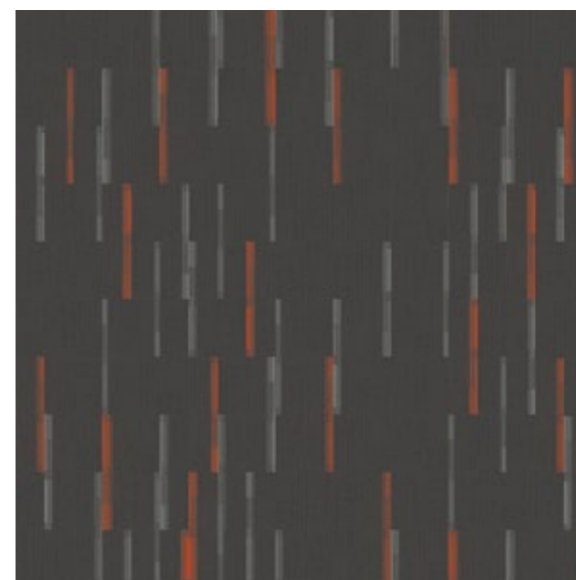
- **PRODUCT ON LINE COLOUR MUSHROOM INSTALLED HERRINGBONE**
- **PRODUCT OFF LINE COLOUR MUSHROOM/MUSTARD INSTALLED HERRINGBONE**
- **PRODUCT OFF LINE COLOUR MUSHROOM/BISCUIT INSTALLED HERRINGBONE**



- **PRODUCT OFF LINE COLOUR PEWTER/MANDARIN INSTALLED ASHLAR**
- **PRODUCT ON LINE COLOUR PEWTER INSTALLED ASHLAR**
- **PRODUCT ON LINE COLOUR MANDARIN INSTALLED ASHLAR**

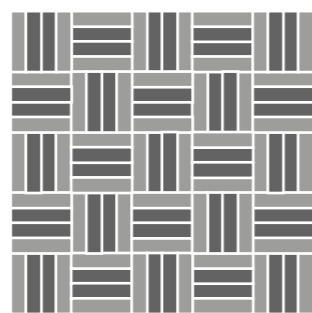
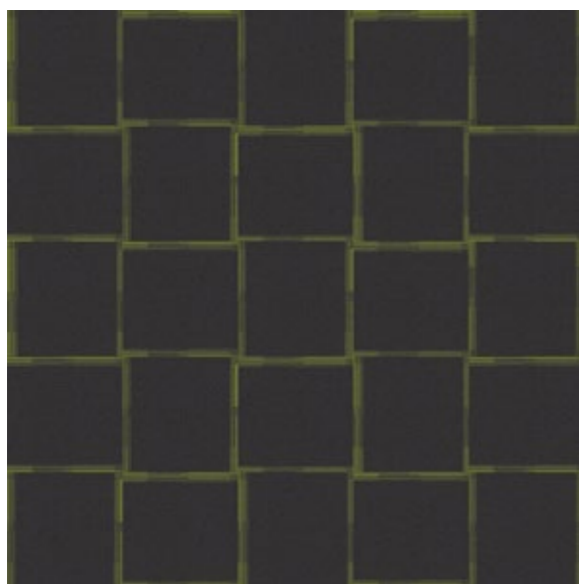


- **PRODUCT ON LINE COLOUR SAGE INSTALLED ASHLAR**
- **PRODUCT ON LINE COLOUR CANARY INSTALLED ASHLAR**
- **PRODUCT OFF LINE COLOUR SAGE/CANARY INSTALLED ASHLAR**

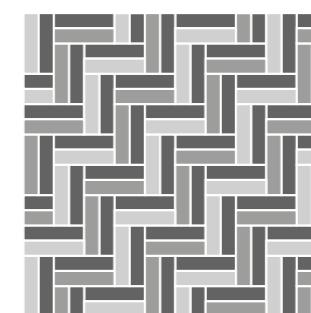


- **PRODUCT OFF LINE COLOUR PEWTER/MANDARIN INSTALLED ASHLAR**
- **PRODUCT OFF LINE COLOUR PEWTER/CLOUD INSTALLED ASHLAR**
- **PRODUCT ON LINE COLOUR PEWTER INSTALLED ASHLAR**

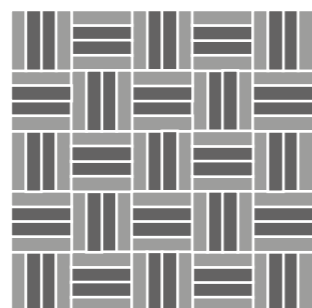
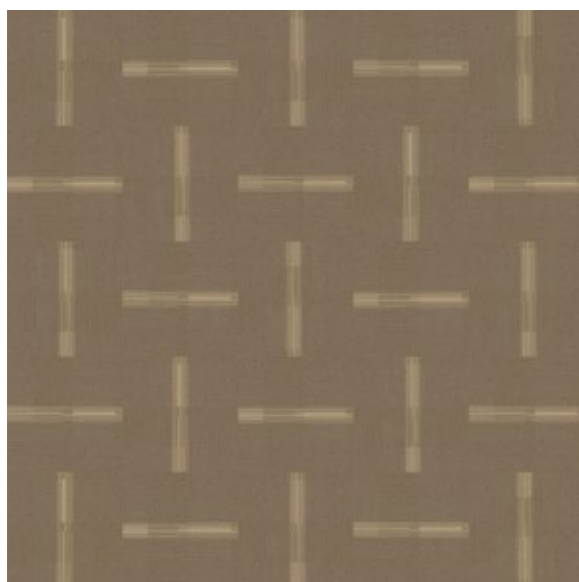
Design Ideas Use the design by tile layout suggestions below to create your own unique floor designs.



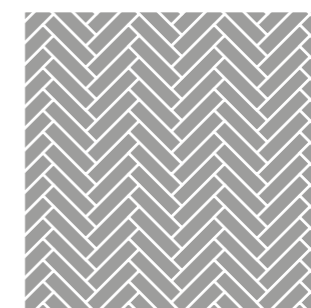
■ **PRODUCT ON LINE COLOUR PEPPER INSTALLED DESIGN BY TILE**  
■ **PRODUCT OFF LINE COLOUR PEPPER/LIME INSTALLED DESIGN BY TILE**



■ **PRODUCT ON LINE COLOUR PEWTER INSTALLED DESIGN BY TILE**  
■ **PRODUCT OFF LINE COLOUR PEWTER/MANDARIN INSTALLED DESIGN BY TILE**  
■ **PRODUCT OFF LINE COLOUR PEWTER/CLOUD INSTALLED DESIGN BY TILE**



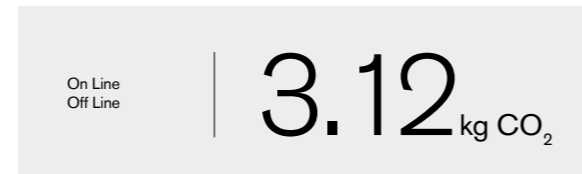
■ **PRODUCT OFF LINE COLOUR MUSHROOM/BISCUIT INSTALLED DESIGN BY TILE**  
■ **PRODUCT ON LINE COLOUR MUSHROOM INSTALLED DESIGN BY TILE**



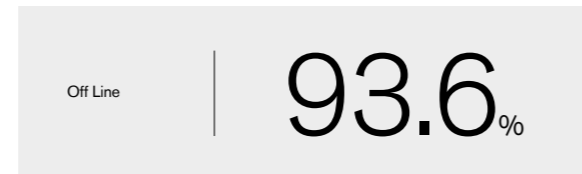
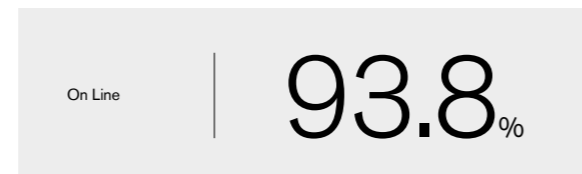
■ **PRODUCT OFF LINE COLOUR PEWTER/CLOUD INSTALLED DESIGN BY TILE**



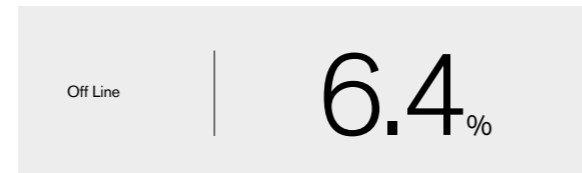
**Carbon Footprint / m<sup>2</sup> (Cradle to Gate)\***



**Total Recycled and Bio-Based Content**

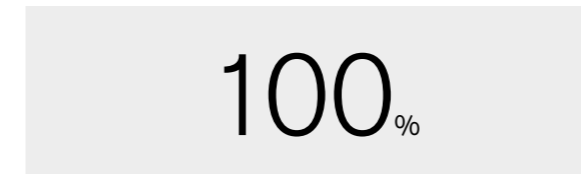


**Total Virgin Content (non recycled and non bio-based)**

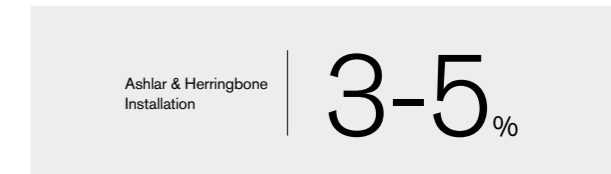


\* Please see [interface.com](http://interface.com) for the most up to date numbers from our EPD.

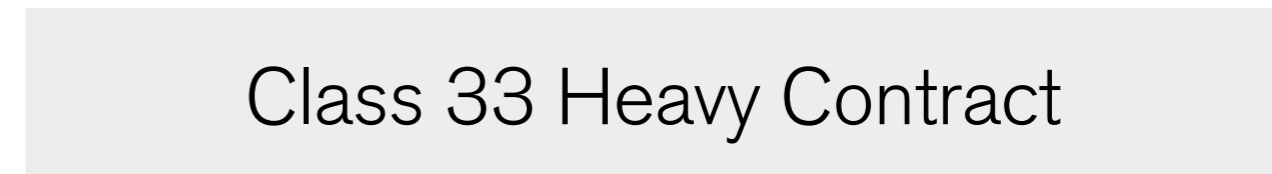
**Yarn Recycled Content**



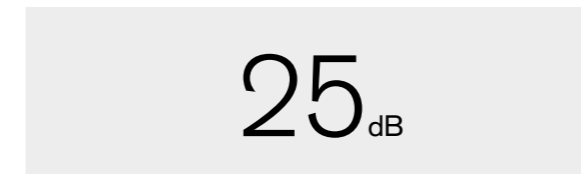
**Installation Waste**



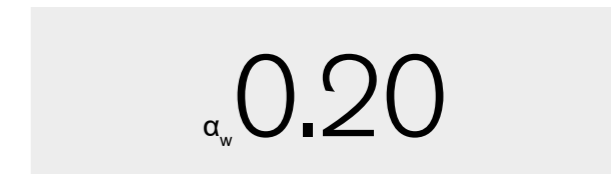
**Wear Classification**



**Impact Sound Insulation ΔLw EN ISO 10140-3**



**Rating of Sound Absorption**



**Potential Green Building Contribution**



**Certifications**





### Standard Backing CQuest™ Bio

**CQUEST™ BIO**  
Backing

#### EN

CQuest™ Bio is non-vinyl, non-bitumen made with a bio-composite, containing bio-based and recycled fillers. These materials, when measured on a standalone basis are net carbon negative.

#### DE

CQuest™ Bio ist eine PVC- und bitumenfreie Rückenkonstruktion, in der biobasierte und recycelte Füllstoffe verwendet werden. Einige der darin enthaltenen Materialien sind für sich betrachtet CO<sub>2</sub>-negativ und reduzieren unseren CO<sub>2</sub>-Fußabdruck maßgeblich.

#### FR

CQuest™ Bio est notre nouvelle sous-couche pour dalles de moquette, sans PVC et sans bitume. Elle est fabriquée avec un bio-composite, mélange de matériaux bio-sourcés et recyclés au bilan carbone net négatif.

#### NL

CQuest™ Bio is onze nieuwe vinylvrije, niet-bitumen tapijttegelbacking gemaakt van een bio-composiet met biobased en gerecyclede vulstoffen. Deze materialen, gemeten op een stand-alone basis, zijn netto CO<sub>2</sub>-negatief.

#### ES

CQuest™ Bio no contiene vinilo ni bitumen. Está fabricado con compuestos bio y rellenos orgánicos y reciclados. Estos materiales son negativos en emisiones de carbono.

#### SE

CQuest™ Bio är vår nya baksida för textilplattor. Den innehåller varken vinyl eller bitumen utan är tillverkad av biokomposit som innehåller biobaserade och återvunna fyllnadsmaterial. Detta gör CQuest™ Bio netto koldioxidnegativ.

### Carbon Neutral Floors™



#### EN

When you specify flooring from Interface, you're selecting products that are carbon neutral across their full product lifecycle.

#### DE

Wenn Sie sich für Bodenbeläge von Interface entscheiden, wählen Sie Produkte, die über ihren gesamten Lebenszyklus CO<sub>2</sub>-neutral sind.

#### FR

Lorsque vous choisissez un revêtement de sol Interface, vous optez pour des produits qui participent à la neutralité carbone collective, tout au long de leur cycle de vie.

#### NL

Wanneer u vloeren van Interface specificeert, selecteert u producten die klimaatneutraal zijn over hun volledige product levenscyclus.

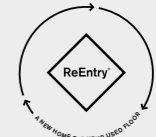
#### ES

Cuando prescribes pavimentos de Interface, estás seleccionando productos que son neutros en emisiones de carbono en todo su ciclo de vida.

#### SE

När du föreskriver Interface golv, väljer du produkter som är koldioxidneutrala genom hela produktlivscykeln

### ReEntry®



#### EN

Interface promises to take back our customers used flooring product (carpet tile, LVT and Rubber) and create further value with them in the most sustainable way.

#### DE

Wir geben Ihnen das Versprechen, Ihre gebrauchten Interface-Bodenbeläge zurückzunehmen und damit einen Mehrwert auf nachhaltigste Art und Weise zu schaffen.

#### FR

Interface s'engage à reprendre les revêtements de sol usagés de ses clients et à leur donner une deuxième vie de la façon la plus éco-responsable possible.

#### NL









Interface belooft onze gebruikte vloerproducten van klanten terug te nemen en creëert daarmee meerwaarde in de meest duurzame manier.

#### ES

Interface se compromete a (moqueta modular, LVT y caucho) recuperar los pavimentos usados de nuestros clientes y crear valor a partir de ellos de la forma más sostenible.

## Technical Specifications - On Line

<b>Product Definition</b>	Tufted Patterned Structured Loop Pile							
Konstruktion	Tuftgemusterte strukturierte Schlingenqualität							
Descripción	Moqueta modular tufting bucle estructurado con diseño							
Description	Dalle de moquette à velours tufté bouclé structuré à motifs							
Type	Getufte gedessineerde gestructureerde bouclé							
Descrizione	Bouclé tufted strutturato							
<b>Pile Material</b>	100% Recycled Solution Dyed Nylon							
Polfasermaterial	100% recyceltes Polyamid garnefärbt							
Composición Fibra	100% Poliamida reciclada tintada en masa							
Composition	Polyamide 100% recyclé teint en masse							
Poolmateriaal	100% Solution Dyed Gerecycled Polyamide							
Fibra	100% Poliammide tinta in massa riciclata							
<b>Pile Yarn Weight</b> / Poleinsatzgewicht / Peso Fibra /	718 g/m <sup>2</sup> ± 5%							
Poids de fibre / Poolinzetgewicht / Peso Felpa								
<b>Total Weight</b> / Gesamtgewicht / Peso Total / Poids total /	3956 g/m <sup>2</sup> ± 5%							
Totaalgewicht / Peso Totale								
<b>Pile Height</b> / Polschichtdicke / Altura Fibra /	3.7 mm + 15% / - 10%							
Hauteur de la fibre / Poolhoogte / Altezza Felpa								
<b>Total Thickness</b> / Gesamtdicke / Espesor Total /	6.9 mm ± 0.5 mm							
Epaisseur totale / Totale dikte / Altezza Totale								
<b>Gauge/Ends 10 cm</b> / Teilung x 10 cm / Galga x 10 cm /	1 / 12 – 47.2							
Jauge-Rangs par 10 cm / Rijen per 10 cm / Serraggio x 10 cm								
<b>Tufts per m<sup>2</sup></b> / Noppenzahl/m <sup>2</sup> / Puntadas m <sup>2</sup> / Densité du tuft par m <sup>2</sup> /	169,920 ± 5%							
Aantal noppen per m <sup>2</sup> / Densità Punti								
<b>Backing Type</b> / Rückenkonstruktion / Soporte /	CQuest™Bio							
Sous-couche / Ruguitvoering / Sottofondo								
<b>Wear Classification</b> / Beanspruchungsklasse / Clasificación al tráfico /	Heavy Contract (EN 1307)							
Classement d'usage et de confort / Gebruiksintensiteit / Resistenza all'usura	Class 33 / LC2							
<b>Radiant Panel</b> / Schwerentflammbarkeit / Clasificación Al Fuego /	(EN ISO 9239-1) Euroclass Cfl s1* (EN 13501-1)							
Classement feu / De Radiant Panel Test / Valutazione delle proprietà ignifughe								
<b>Dimensional Stability</b> / Dimensionsstabilität / Estabilidad Dimensional /	≤ 0.2% (EN 986)							
Stabilité dimensionnelle / Dimensionele stabiliteit / Test Stabilità dimensionale								
<b>Impact Sound Insulation (ΔL<sub>w</sub>)</b> / Trittschallverbesserungsmaß /	25 dB (EN ISO 10140-3)							
Impacto Aislamiento Acústico / Réduction du bruit d'impact /								
Contactgeluid absorptie / Isolamento all'impatto acustico								
<b>Rating of Sound Absorption</b> / Gewichteter Schallabsorptionskoeffizient /	α <sub>w</sub> 0.20 (EN ISO 11654)							
Clasificación de Absorción de Sonido / Coefficient d'absorption acoustique /								
Waarde geluidsabsorptie / Valutazione dell'assorbimento acustico								
<b>Sound Absorption</b> / Schallabsorptionsgrad / Absorción de Sonido /								
Absorption acoustique / Geluidsabsorptie / Assorbimento acustico								
	<table border="1"> <tr> <td><b>125Hz</b> 0.02</td> <td><b>250Hz</b> 0.03</td> <td><b>500Hz</b> 0.08</td> <td><b>1000Hz</b> 0.18</td> <td><b>2000Hz</b> 0.33</td> <td><b>4000Hz</b> 0.40</td> <td>(EN ISO 354) α<sub>s</sub></td> </tr> </table>	<b>125Hz</b> 0.02	<b>250Hz</b> 0.03	<b>500Hz</b> 0.08	<b>1000Hz</b> 0.18	<b>2000Hz</b> 0.33	<b>4000Hz</b> 0.40	(EN ISO 354) α <sub>s</sub>
<b>125Hz</b> 0.02	<b>250Hz</b> 0.03	<b>500Hz</b> 0.08	<b>1000Hz</b> 0.18	<b>2000Hz</b> 0.33	<b>4000Hz</b> 0.40	(EN ISO 354) α <sub>s</sub>		
<b>Style</b> 7335	5m <sup>2</sup> - 20 tiles per box (25 x 100 cm ± 0.2%)							

 DOP: 1037/126553 EN 14041:2004 Notified Body - 0493 COC 0493 – CPR – 0182 For use as floor covering in buildings	 DOP: 1037/126553 EN 14041:2004 Approved Body - 0321 COC 0321/21671-01/E00-00 For use as floor covering in buildings	 	   
--	---	--	---

\* Bfl s1 on request / Bfl s1 auf Anfrage / Bfl s1 Bajo pedido / Bfl s1 disponible en option. Tarif et conditions sur demande / Bfl s1 Op aanvraag

## Light Values

Product	Colour No	Colour Name	L Value*	Y Value*
<b>On Line</b>	7335001	Biscuit	60.8	29.0
	7335002	Mushroom	47.7	16.6
	7335003	Mustard	28.7	5.7
	7335004	Sage	43.7	13.6
	7335005	Canary	57.5	25.4
	7335006	Cloud	55.9	23.8
	7335007	Pewter	34.6	8.3
	7335008	Mandarin	46.6	15.7
	7335009	Pepper	28.7	5.7
	7335010	Lime	47.6	16.5

\* **Light Value:** L Value = L according to CIE L\*a\*b\* colour space, Y Value = Light Reflectance Value according to BS 8493

**Lichtreflexionswerte:** L-Wert = L gemäß CIE L\*a\*b\* Farbspektrum, Y-Wert = Lichtreflexionswert gemäß British Standard BS 8493

**Valores de Reflectancia de Luz:** Valor L= L según CIE L\*a\*b\* espacio de color, Valor Y = Valor de reflectancia de luz según el estándar británico BS 8493

**Valeurs concernant la lumière:** Valeur L = L faisant référence à la méthode CIE L\*a\*b\* pour la couleur, Valeur Y = Valeurs de réflectance de la lumière selon le British Standard BS 8493



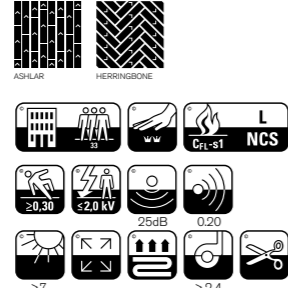
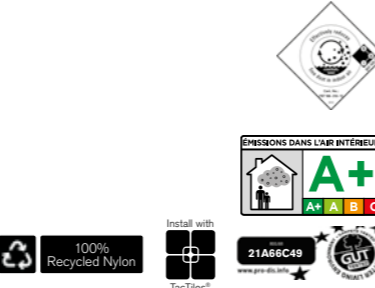
**Licht waarden:** L Waarde = L volgens CIE L\*a\*b\*kleurruimte, Y Waarde = Licht Reflectie Waarde volgens BS 8493

**Indici di riflettanza alla luce:** Indice L= L secondo CIE L\*a\*b\* colour space, IndiceY= Indice di riflettanza alla luce secondo la norma BS 8493

## Technical Specifications - Off Line

<b>Product Definition</b>	Tufted Patterned Structured Loop Pile							
Konstruktion	Tuftgemusterte strukturierte Schlingenqualität							
Descripción	Moqueta modular tufting bucle estructurado con diseño							
Description	Dalle de moquette à velours tufté bouclé structuré à motifs							
Type	Getufte gedessineerde gestructureerde bouclé							
Descrizione	Bouclé tufted strutturato							
<b>Pile Material</b>	100% Recycled Solution Dyed Nylon							
Polfaserematerial	100% recyceltes Polyamid garnefärbt							
Composición Fibra	100% Poliamida reciclada tintada en masa							
Composition	Polyamide 100% recyclé teint en masse							
Poolmateriaal	100% Solution Dyed Gerecycled Polyamide							
Fibra	100% Poliammide tinta in massa riciclata							
<b>Pile Yarn Weight</b> / Poleinsatzgewicht / Peso Fibra / Poids de fibre / Poolinzetgewicht / Peso Felpa	718 g/m <sup>2</sup> ± 5%							
<b>Total Weight</b> / Gesamtgewicht / Peso Total / Poids total / Totaalgewicht / Peso Totale	3976 g/m <sup>2</sup> ± 5%							
<b>Pile Height</b> / Polschichtdicke / Altura Fibra / Hauteur de la fibre / Poolhoogte / Altezza Felpa	3.8 mm + 15% / - 10%							
<b>Total Thickness</b> / Gesamtdicke / Espesor Total / Epaisseur totale / Totale dikte / Altezza Totale	6.9 mm ± 0.5 mm							
<b>Gauge/Ends 10 cm</b> / Teilung x 10 cm / Galga x 10 cm / Jauge-Rangs par 10 cm / Rijen per 10 cm / Serraggio x 10 cm	1 / 12 – 47.2							
<b>Tufts per m<sup>2</sup></b> / Noppenzahl/m <sup>2</sup> / Puntadas m <sup>2</sup> / Densité du tuft par m <sup>2</sup> / Aantal noppen per m <sup>2</sup> / Densità Punti	169,920 ± 5%							
<b>Backing Type</b> / Rückenkonstruktion / Soporte / Sous-couche / Ruguitvoering / Sottofondo	CQuest™Bio							
<b>Wear Classification</b> / Beanspruchungsklasse / Clasificación al tráfico / Classement d'usage et de confort / Gebruiksintensiteit / Resistenza all'usura	Heavy Contract (EN 1307) Class 33 / LC2							
<b>Radiant Panel</b> / Schwerentflammbarkeit / Clasificación Al Fuego / Classement feu / De Radiant Panel Test / Valutazione delle proprietà ignifughe	(EN ISO 9239-1) Euroclass Cfl s1* (EN 13501-1)							
<b>Dimensional Stability</b> / Dimensionsstabilität / Estabilidad Dimensional / Stabilité dimensionnelle / Dimensionele stabiliteit / Test Stabilità dimensionale	≤ 0.2% (EN 986)							
<b>Impact Sound Insulation (ΔL<sub>w</sub>)</b> / Trittschallverbesserungsmaß / Impacto Aislamiento Acústico / Réduction du bruit d'impact / Contactgeluid absorptie / Isolamento all'impatto acustico	25 dB (EN ISO 10140-3)							
<b>Rating of Sound Absorption</b> / Gewichteter Schallabsorptionskoeffizient / Clasificación de Absorción de Sonido / Coefficient d'absorption acoustique / Waarde geluidsabsorptie / Valutazione dell'assorbimento acustico	α <sub>w</sub> 0.20 (EN ISO 11654)							
<b>Sound Absorption</b> / Schallabsorptionsgrad / Absorción de Sonido / Absorption acoustique / Geluidsabsorptie / Assorbimento acustico								
	<table border="1"> <tr> <td><b>125Hz</b> 0.02</td> <td><b>250Hz</b> 0.03</td> <td><b>500Hz</b> 0.08</td> <td><b>1000Hz</b> 0.18</td> <td><b>2000Hz</b> 0.33</td> <td><b>4000Hz</b> 0.40</td> <td>(EN ISO 354) α<sub>s</sub></td> </tr> </table>	<b>125Hz</b> 0.02	<b>250Hz</b> 0.03	<b>500Hz</b> 0.08	<b>1000Hz</b> 0.18	<b>2000Hz</b> 0.33	<b>4000Hz</b> 0.40	(EN ISO 354) α <sub>s</sub>
<b>125Hz</b> 0.02	<b>250Hz</b> 0.03	<b>500Hz</b> 0.08	<b>1000Hz</b> 0.18	<b>2000Hz</b> 0.33	<b>4000Hz</b> 0.40	(EN ISO 354) α <sub>s</sub>		

**Style** 7559 5m<sup>2</sup> - 20 tiles per box (25 x 100 cm ± 0.2%)

 DOP: 1037/126726 EN 14041:2004 Notified Body - 0493 COC 0493 – CPR – 0182 For use as floor covering in buildings	 DOP: 1037/126726 EN 14041:2004 Approved Body - 0321 COC 0321/21671-01/E00-00 For use as floor covering in buildings	 <p>ASHLAKK HERRINGBONE</p> <p>33</p> <p>ww</p> <p>CrFI-s1</p> <p>NCS</p> <p>≥0.30</p> <p>≤2.0 kV</p> <p>25dB</p> <p>0.20</p> <p>≥7</p> <p>≥2.4</p>	 <p>100% Recycled Nylon</p> <p>Install with TacTiles*</p> <p>21A66C49</p> <p>www.interface.com</p> <p>CE</p>
--	---	--	--

\* Bfl s1 on request / Bfl s1 auf Anfrage / Bfl s1 Bajo pedido / Bfl s1 disponible en option. Tarif et conditions sur demande / Bfl s1 Op aanvraag

 **Carbon Neutral Floors™**  
Learn more about our third-party verified Carbon Neutral Floors.  
www.interface.com/carbonneutral

[www.interface.com](http://www.interface.com)

## Light Values

Product	Colour No	Colour Name	L Value*	Y Value*
<b>Off Line</b>	7559001	Mushroom/Biscuit	50.5	18.8
	7559002	Mushroom/Mustard	48.7	17.4
	7559003	Sage/Biscuit	48.6	17.3
	7559004	Sage/Canary	46.6	15.7
	7559005	Pewter/Cloud	35.8	8.9
	7559006	Pewter/Mandarin	35.8	8.9
	7559007	Pepper/Cloud	33.8	7.9
	7559008	Pepper/Lime	32.2	7.2

\* **Light Value:** L Value = L according to CIE L\*a\*b\* colour space, Y Value = Light Reflectance Value according to BS 8493

**Lichtreflexionswerte:** L-Wert = L gemäß CIE L\*a\*b\* Farbspektrum, Y-Wert = Lichtreflexionswert gemäß British Standard BS 8493

**Valores de Reflectancia de Luz:** Valor L = L según CIE L\*a\*b\* espacio de color, Valor Y = Valor de reflectancia de luz según el estándar británico BS 8493

**Valeurs concernant la lumière:** Valeur L = L faisant référence à la méthode CIE L\*a\*b\* pour la couleur, Valeur Y = Valeurs de réflectance de la lumière selon le British Standard BS 8493

**Licht waarden:** L Waarde = L volgens CIE L\*a\*b\*kleurruimte, Y Waarde = Licht Reflectie Waarde volgens BS 8493

**Indici di riflettanza alla luce:** Indice L = L secondo CIE L\*a\*b\* colour space, Indice Y = Indici di riflettanza alla luce secondo la norma BS 8493

**EN** Interface European Manufacturing BV reserves the right to change or modify specifications. Please see website for latest specifications. We have tried our very best to accurately represent product colours. However, due to the nature of printed materials, colour of actual products may vary slightly. Please request a sample to see actual product colour.

**DE** Interface European Manufacturing BV behält sich das Recht vor, Produktspezifikationen zu ändern oder entsprechend anzupassen. Die aktuellsten technischen Spezifikationen finden Sie auf unserer Website. Wir versuchen die Farben so naturgetreu wie möglich wiederzugeben. Farbabweichungen lassen sich jedoch nicht ausschließen. Bitte fordern Sie ein Muster an, um sich von der tatsächlichen Farbe zu überzeugen.

**ES** Interface European Manufacturing BV se reserva el derecho a modificar las especificaciones arriba referenciadas. Por favor, consulta nuestra web para ver las últimas especificaciones. Hemos intentado representar con la máxima precisión posible los Colores del producto. Sin embargo, debido a la naturaleza de los materiales impresos, el Color de los productos reales puede variar ligeramente. Por favor, solicita una muestra para ver el Colour real del producto.

**FR** Interface European Manufacturing BV se réserve la possibilité de modifier les caractéristiques ci-dessus. Les caractéristiques techniques à jour sont consultables sur le site internet. Les couleurs présentées se rapprochent au maximum des Coloris réels. Toutefois, les procédés d'impression des matériaux peuvent entraîner une légère variation du Coloris. Merci de demander un échantillon pour constater la couleur des produits.

**NL** Interface European Manufacturing BV behoudt zich het recht voor de specificaties te allen tijde aan te passen. Zie de website voor de nieuwste specificaties. Wij hebben getracht de productkleuren zo goed mogelijk te reproduceren. De kleuren van geprint materiaal kunnen echter altijd enigszins afwijken. Vraag altijd stalenmateriaal aan om de daadwerkelijke kleur te beoordelen.

**SE** Vi har gjort vårt bästa för att representera korrekta produktfärger. Emellertid, på grund av typen av tryckt material, kan färgen på faktiska produkter variera något. Beställ gärna ett prov för att se aktuell produktfärg.



## Carbon Neutral Floors™

### Europe, Middle East & Africa

AE	+971 44508175
AT	+43 1 8102839
BA	+387 33 522 534
BE	+32 2 475 27 27
BG	+359 2 808 303
BY	+375 17 226 75 14
CH	+41 44 913 68 00
CZ	+42 0 233 087 111
DE	+49 2151 3718 0
DK	+45 33 79 70 55
EE	+372 6518 313
ES	+34 932 418 750
EG	+(202) 3760 7818
FR	+33 1 58 10 20 20
GR	+30 211 2120820
HR	+385 14 62 30 63
HU	+36 1 349 6545
IE	+353 1 679 8466
IL	+972 97403034
IT	+39 02 890 93678
KZ	+7 701 391 88 13
LT	+370 37 337332
LV	+371 672 18 744
NL	+31 33 277 5555
ME	+381 11 414 92 00
MK	+389 2 323 01 89
NO	+47 23 12 01 70
PL	+48 22 862 48 40
PT	+351 217 122 740
RO	+40 21 317 12 40/42/43/44
RS	+381 11 414 92 00
SA	+966 554622263
SE	+468 241 230
SK	+421 911 104 073
SI	+386 8 205 4007
TR	+ 90 212 248 97 77
UA	+38(044)238 27 67
UK	+44 (0)800 3134465
ZA	+27 11 608 4270

